

DATA SHEET

soni COMFORT | soni COMFORT F

- ▶ **soni COMFORT** is a very hard-wearing sound absorber made of a white PES non-woven fabric with exceptionally good sound-absorption capacity. In addition, **soni COMFORT** offers excellent fire-resistance values.
- ▶ For covering entire wall or ceiling surfaces we recommend using **soni COMFORT F**. While **soni COMFORT** has plain edges, **soni COMFORT F** has beveled edges all around (10 x 10 mm), creating a beautiful visual effect when installed edge to edge. Additional advantage: The resulting pattern helps conceal any uneven patches on the ceiling or wall.



Completely recyclable

TECHNICAL DATA

FLAMMABILITY	<ul style="list-style-type: none"> ▶ DIN 4102, tested according to B1 (flame-retardant) ▶ Fulfills the strict fire safety standard for the automotive industry (FMVSS 302, DIN 75 200) ▶ ISO 3795, burning rate < 100 mm/min
TEMPERATURE RESISTANCE	▶ -50°C to +150°C
THERMAL CONDUCTIVITY / EN 12667	▶ ≤ 0.037 W/(m·K) at 10°C (comparable to Styrofoam acc. to wLG 035)
DIMENSION CHANGE WHEN EXPOSED TO HEAT	▶ at temperatures above 100°C: approx. ± 10%

DIMENSIONS

PRODUCT	THICKNESS [mm] / TOLERANCE	SHEETS / TOLERANCE [mm]	WEIGHT PER SHEET
COMFORT / COMFORT F	30 ± 10%	1000 X 500 ± 5	450 g
	50 ± 10%	1000 X 500 ± 5	750 g

ADVICE

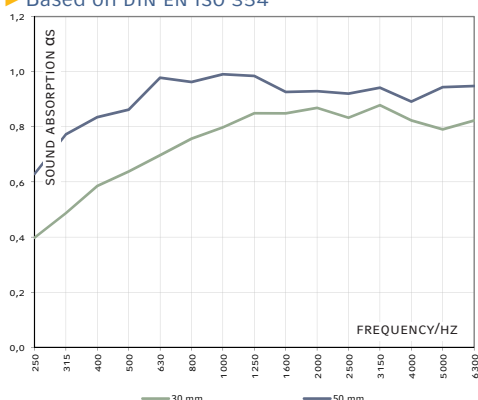
- ▶ With its beveled edges, **soni COMFORT F** is especially suitable for side-by-side installation to cover large surfaces. To compensate for potential thickness tolerances we recommend leaving a shadow joint of 3 to 5 cm between panels. This installation method does not only create a neat and optically attractive design, but also helps conceal surface irregularities.
- ▶ There might be minimal color variations between different lots

BENEFITS

- ▶ High sound absorption values
- ▶ Optimized room acoustics
- ▶ Excellent flammability characteristics (B1 fulfilled)
- ▶ For ceiling installation: meets impact resistance test acc. to DIN 18032-3
- ▶ High durability and good shape stability
- ▶ Free of mineral fibers, physiologically safe
- ▶ No emission of formaldehyde
- ▶ High ageing stability
- ▶ Simple fixing by means of: soni SPECIAL ADHESIVE, soni VELCRO TAPE OR soni RING HANGER.

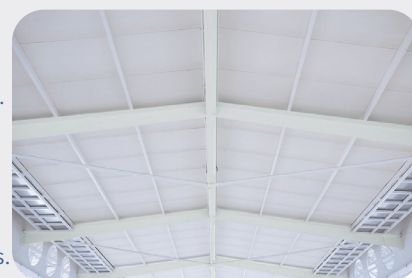
REVERBERATION ROOM

- ▶ Based on DIN EN ISO 354



APPLICATIONS

- ▶ **soni COMFORT** and **soni COMFORT F** has been tested successfully according to the DIN 4102 fire safety standard and is classified as fire-retardant (B1). Therefore it is the material of choice for all applications requiring both an effective noise reduction and full compliance with fire safety regulations. When used as a ceiling element, **soni COMFORT** also fulfills the impact-resistance requirements according to DIN 18032-3 and is ideally suited for use in sports facilities and gymnasiums.



PLEASE SEE OUR PROCESSING AND STORAGE INSTRUCTIONS

Details and values given in this leaflet are average values and have been compiled with care. They are not binding, however, and Cellofoam International GmbH & Co. KG disclaims any liability for any damages and detriments, also in connection with any third party's rights. The information given does not release the buyers from making the necessary experiments and tests themselves. Subject to technical changes. For updates please go to our website.

Cellofoam International GmbH & Co. KG
Business unit soniflex
P: +49 7351 340 28 61
sales@soniflex.de / www.soniflex.de

VERSION 10/23

Distribution partner for Switzerland:
soniflex Switzerland
P: +41 44 377 60 50
einkauf@soniflex.ch / www.soniflex.ch